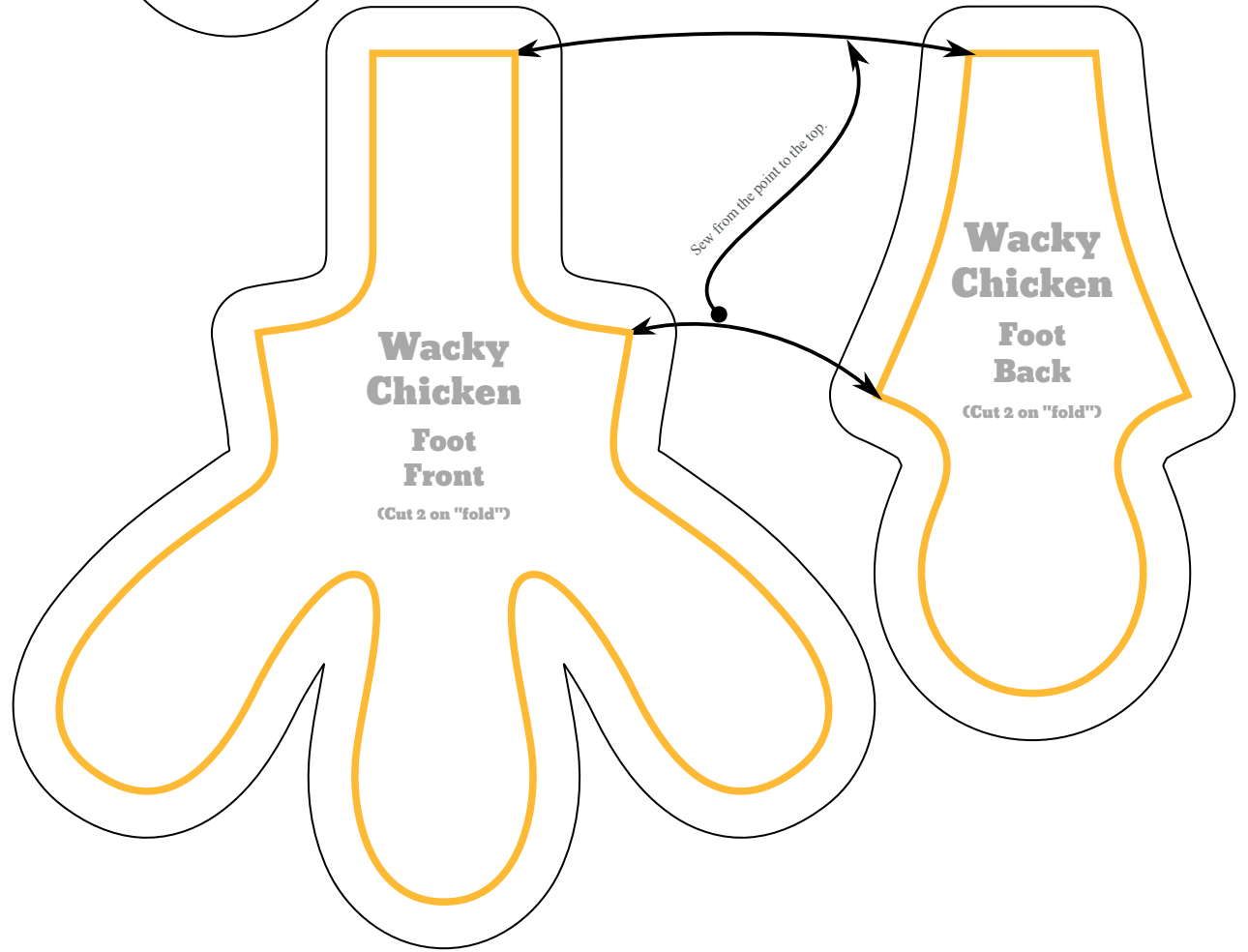
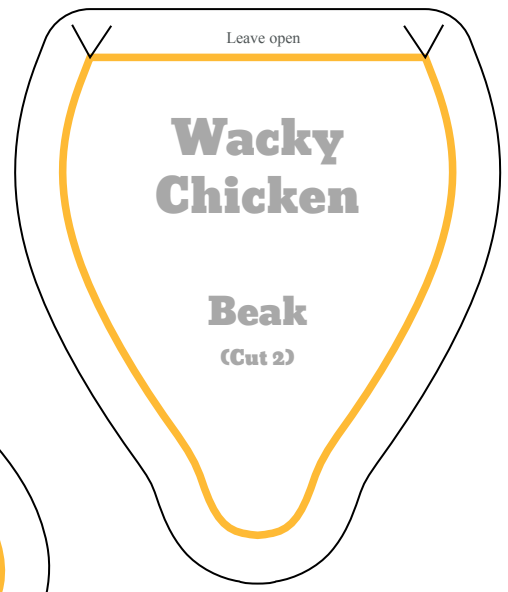
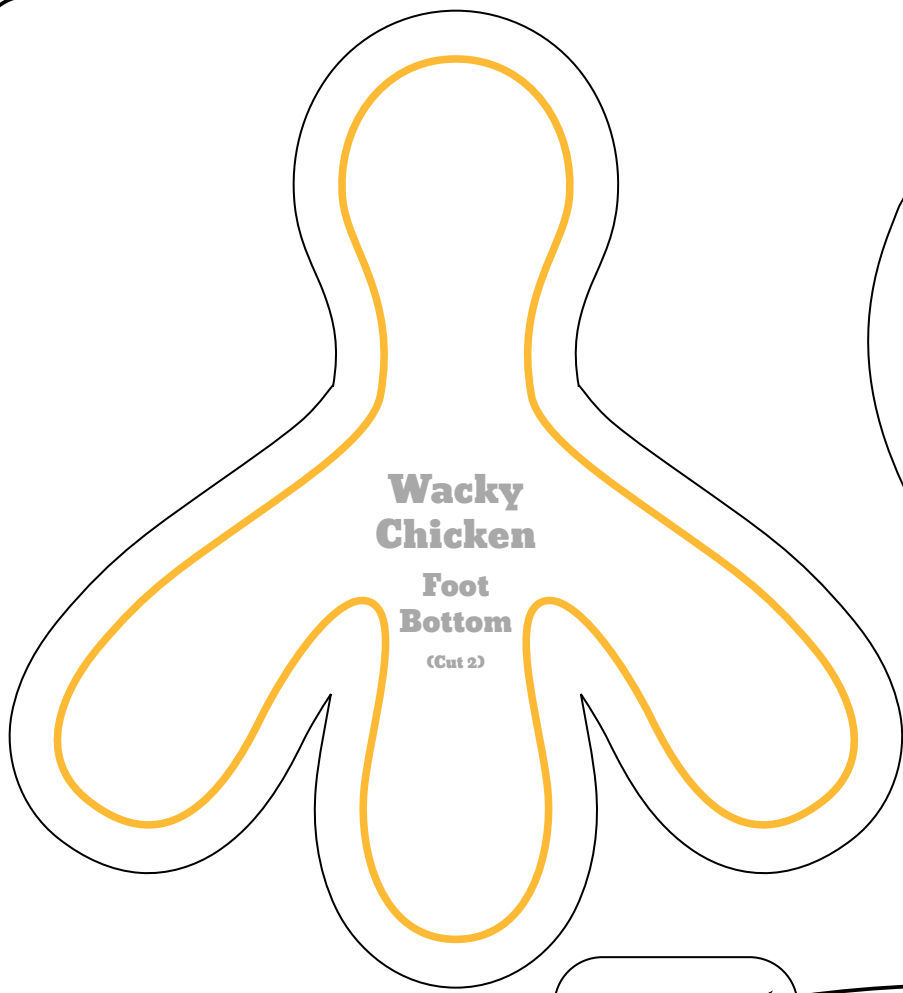


Insert comb into back seam here

Wacky Chicken

Body
(Cut 2
w/1 leg,
1 w/2 legs)



**Wacky
Chicken**

Tail
(Cut 6,
3 reversed)

**Wacky
Chicken
Wing**

(Cut 4, 2 reversed)

**Wacky
Chicken**

Wattle
(Cut 4)

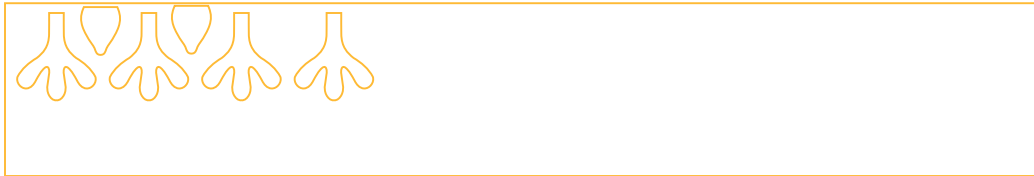
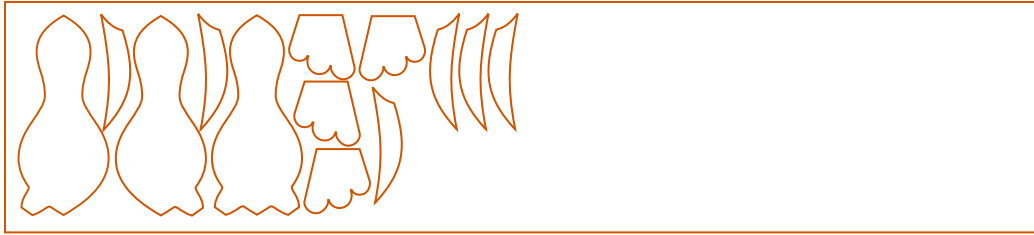
**Wacky
Chicken**

Comb
(Cut 2,
1 reversed)

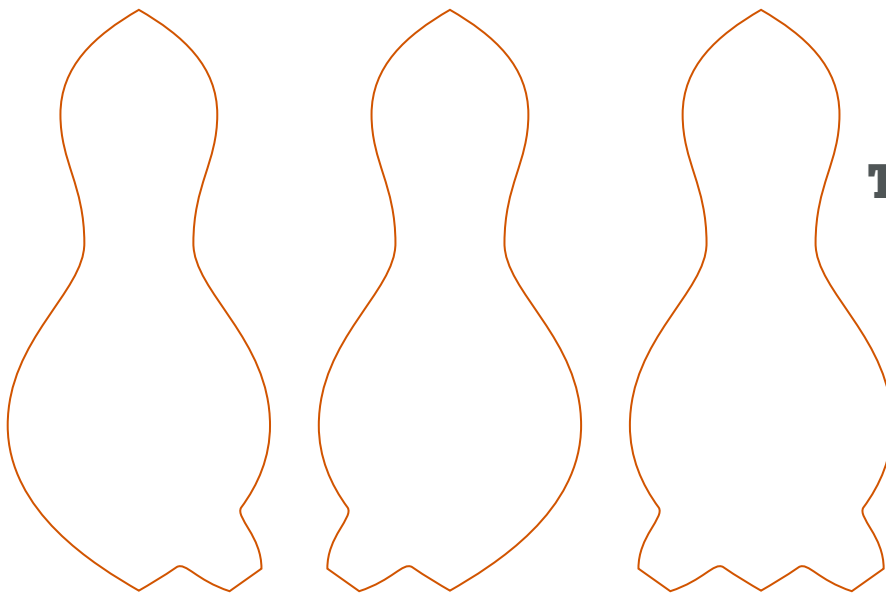
**Wacky
Chicken**

Foot
(Cut 4,
on "fold")

Fabric Cutting Layout



54" Plush, Minky, Fleece



The body is composed of three different pieces. Make sure you cut them correctly - the two sides should be mirrored.