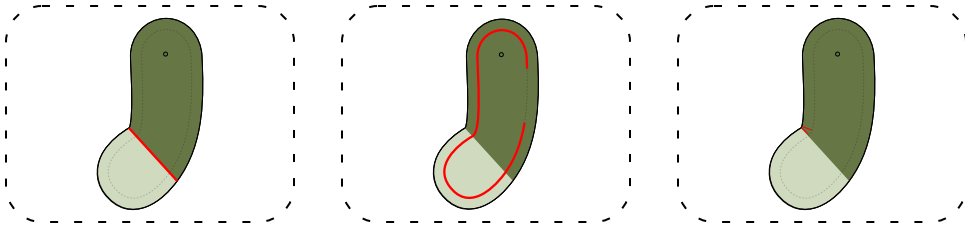


sewing the arms

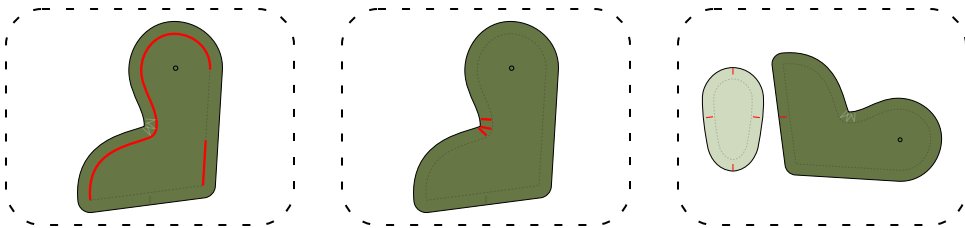


If you're sewing a two-color arm, sew the pawpad on first.

Sew the arms, leaving an opening large enough to turn it and to fit the joint disk through.

Snip the inside of the curves, being careful not to cut into the seam.

sewing the legs

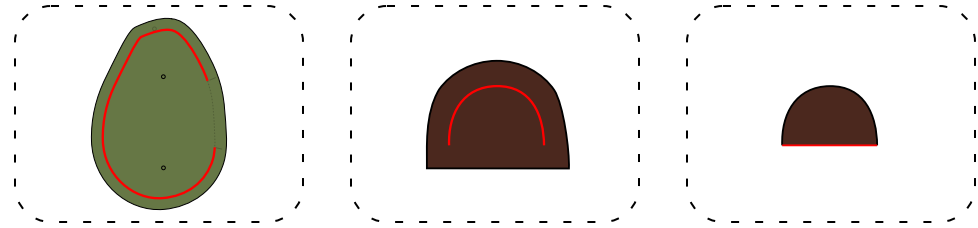


Sew the legs, leaving the bottom of the foot open, and leaving an opening large enough to turn.

Snip the insides of the curves, being careful not to cut into the seam.

Match the marks on the footpad up to the marks and seams on the leg, and carefully sew the footpad in.

sewing the body and ears

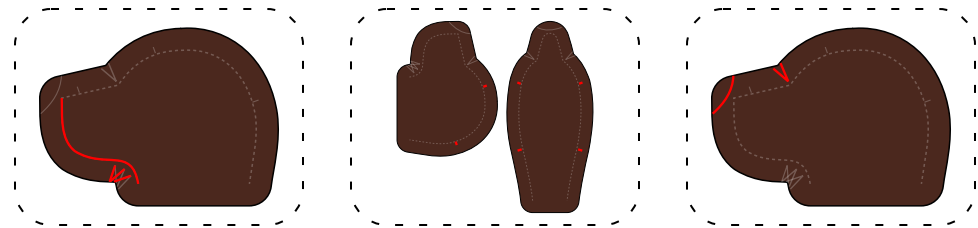


Sew the body, leaving a fairly large turning opening so you have room to work later.

Sew the ears, then turn them right-side out.

Tuck the seam allowances in, and ladder-stitch the opening closed.

sewing the head



Sew the chin seam, and clip inside the curve.

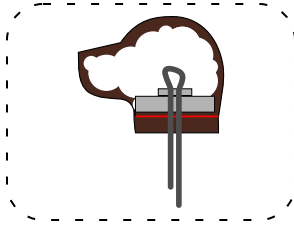
Match the point of the nose to the seam, the eye notches, and the other marks, and sew the head gusset.

Clip the "curve" of the eye notch, and remove some of the seam allowance bulk at the nose.

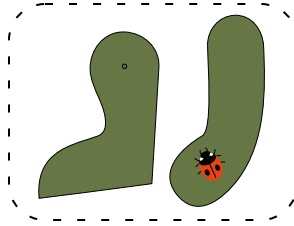
assembly



Run a basting line around the bottom of the head opening. Stuff the head *firmly*.

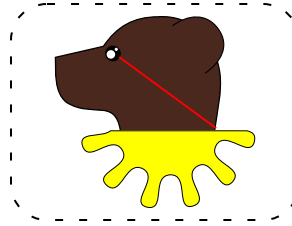


Put a cotter pin through a washer and joint disk, and gather the head opening around it.

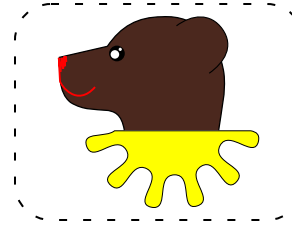


Do the same for the arms/legs, but put the joint in before stuffing it. Ladder-stitch the openings.

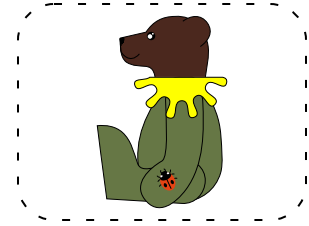
final assembly



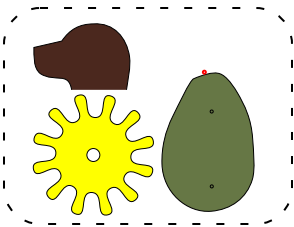
Sew the eyes in, anchoring the threads as close to the base of the head as the joint disk will allow.



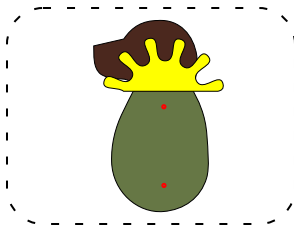
Embroider the nose and mouth.



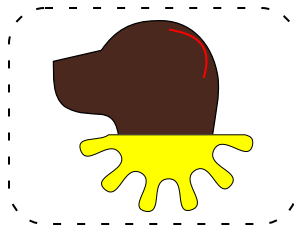
Sew up the back opening and you're done!



The head joint goes through the flower, the seam, another disk, and another washer. Tighten the cotter pin down.



Now do the same for the arms and legs. Wrap the flower and head in cling wrap to keep them out of the way.



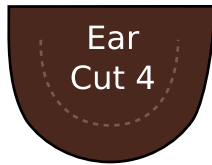
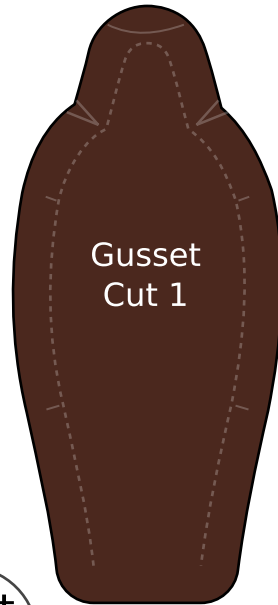
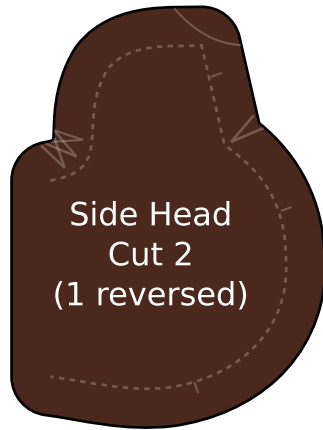
Ladder-stitch the ears in place. Experiment with placement!

FLOWER BEAR

Copyright 2018

SILVER SEAMS

open source sewing



Joint
Size

Align pieces on fabric so that any pile goes in the direction of the arrow.
If you don't want to make a separate colored paw pad, cut four pieces using the Outer Arm pattern.

↓ Pattern is designed for 3/4" joints - scale it to the joints you have.

